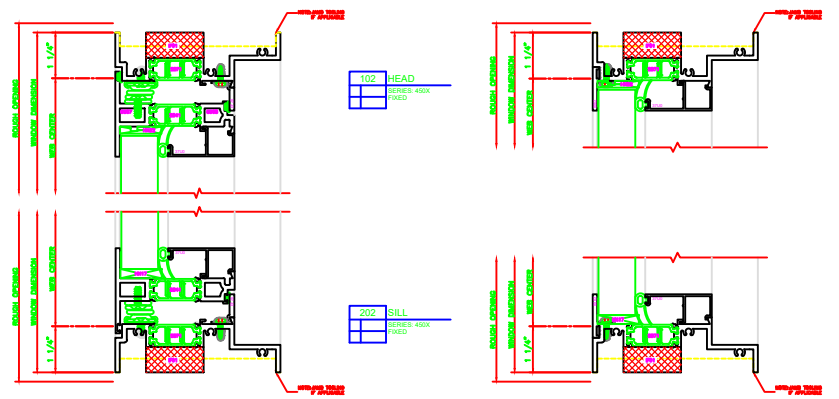
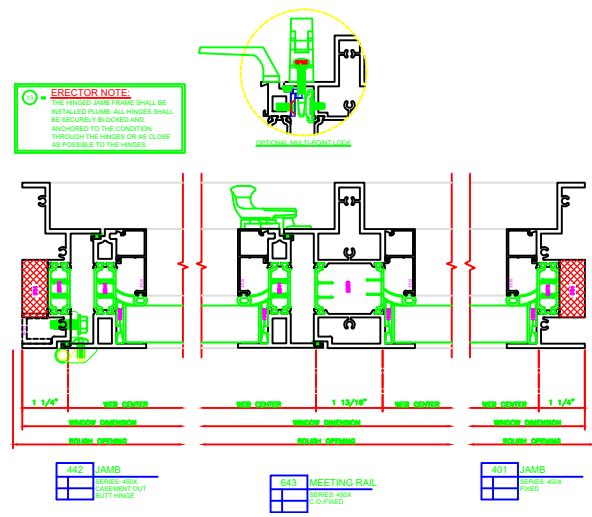


- 142 HEAD
SERIES 400K
CASSEMENT OUT
4-BAR ARMS
- 242 SILL
SERIES 400K
CASSEMENT OUT
4-BAR ARMS
- 440 JAMB
SERIES 400K
CASSEMENT OUT
4-BAR ARMS
- 643 MEETING RAIL
SERIES 400K
C-CLIP W/FEED
- 401 JAMB
SERIES 400K
FIXED



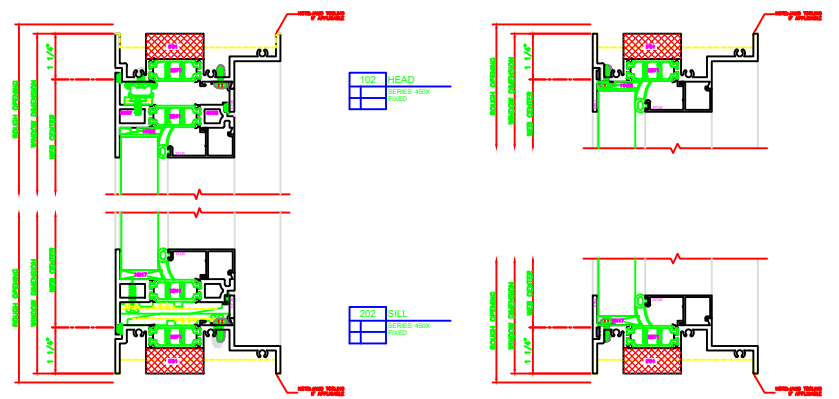
- 102 HEAD
SERIES 400K
FIXED
- 202 SILL
SERIES 400K
FIXED

4-BAR ARMS
BUTT HINGE



ERECTOR NOTE:
THE HINGED JAMB FINISH SHALL BE INSTALLED FIRST. ALL HINGES SHALL BE SECURELY BLOCKED AND ANCHORED TO THE CONCRETE THROUGH THE HINGES OR AS CLOSE AS POSSIBLE TO THE HINGES.

- 143 HEAD
SERIES 400K
CASSEMENT OUT
4-BAR ARMS
- 243 SILL
SERIES 400K
CASSEMENT OUT
4-BAR ARMS
- 402 JAMB
SERIES 400K
CASSEMENT OUT
BUTT HINGE
- 643 MEETING RAIL
SERIES 400K
C-CLIP W/FEED
- 401 JAMB
SERIES 400K
FIXED



- 102 HEAD
SERIES 400K
FIXED
- 202 SILL
SERIES 400K
FIXED